



Authorized GSA Schedule Catalog and Price List for Professional Services

GSA SCHEDULE CONTRACT NO. 47QRAA18D0073
Contract Period: March 30, 2018 – March 29, 2023



ecology and environment, inc.
Global Environmental Specialists



ecology and environment, inc.
Global Environmental Specialists

General Services Administration Federal Supply Service

Authorized Federal Supply Price
List and Schedule Catalog

**00Corp PROFESSIONAL SERVICES
SCHEDULE; Environmental Services**

Contract No. 47GRAA18D0073

Ecology and Environment, Inc.

1501 Lee Highway, Suite 306

Arlington, Virginia 22209

Phone: 703-522-6065

FAX: 703-558-7950 www.ene.com

Business Size: Large

Contract Information:

Federal Supply Group: 00CORP

Contract Base Period:

March 30, 2018 – March 29, 2023

Modification A680

GSA Refresh 00Corp PSS 30

Dated September, 2018

Online access to contract ordering information, terms and conditions, up-to-date pricing, and the option to create an electronic delivery order are available through GSA Advantage®, a menu-driven database system. The INTERNET address GSA Advantage® is www.GSAADVANTAGE.gov. The E & E price catalogue can be obtained electronically at www.ene.com.

Table of Contents

Customer Information 4

About E & E
Offering Best-Value in Environmental Services..... 6

Procedures for Obtaining E & E Services Using GSA..... 7

Description of Special Item Numbers (SINs) and E & E Experience..... 8

GSA Professional Services Labor Price List..... 16

Labor Category Descriptions 18

Customer Information

In Accordance with I-FSS-600(b)(ii)

Data Universal Numbering System (DUNS): 03-776-1004

Type of Contractor: NAICS Code: 541620 – Environmental Consulting Services Large Business

Contractors Taxpayer Identification Number (TIN): 16-0971022

Cage Code: 3X8R5

1a. Table of Awarded Special Item Numbers (SIN)

899-1/SIN 899-1RC: Environmental Consulting Services

899-7/SIN 899-7RC: Geographic Information System (GIS) Services

899-8/SIN 899-8RC: Remediation and Reclamation Services

00CORP-500/SIN 00CORP-500RC: Order-Level Materials

1b. Contract Labor Price List: See Pages 16-17

1c. Labor Category Descriptions: See Pages 18-26

2. Maximum Order: \$1,000,000

3. Minimum Order: \$100

4. Geographic Coverage (Delivery Area): Domestic and worldwide. See map of office locations on page 28.

5. Points of Production: Not Applicable

6. Prices: Shown Herein are Net Prices.

7. Quantity Discounts:

2% discount for the total value of orders equal to or exceeding \$250,000.

3% discount for the total value of orders equal to or exceeding \$500,000.

8. Prompt Payment Terms: Net 30 days with no special discount offered for prompt payment.

9. Government Purchase Cards: E & E accepts Government Credit Cards on all orders regardless of size.

10. Foreign items: None

11. Time of Delivery (a-d): To be negotiated with ordering agency on each work order. Contact the E & E program manager directly for specific delivery methods.

12. FOB point(s): Destination

13a. Ordering Address:

Ecology and Environment, Inc.

Kevin Donovan

1501 Lee Highway, Suite 306

Arlington, VA 22209

Office: 703-522-6065 ext. 3447

Fax: 703-558-7950

E-mail: kdonovan@ene.com

13b. Ordering Procedures: Procedures for supplies and services, the ordering procedures, information on Blanket Purchase Agreements (BPAs), and a sample BPA can be found at the GSA/FSS Schedule homepage (fss.gsa.gov/schedules).

14. Payment Address:

Ecology and Environment, Inc.

Accounts Receivable

368 Pleasant View Drive

Lancaster, NY 14086

Note: Electronic Funds Transfer (EFT) is also available. Contact E & E's Program Manager for details.

15. Warranty Provisions: Not Applicable

16. Export Packaging Charges: Not Applicable

17. Terms and Conditions of Government Purchase Card Acceptance: No limitations on acceptance. Payment terms continue to be net 30 days. See 9 above.

18. Terms and conditions of rental, maintenance, and repair (if applicable): N/A

19. Terms and conditions of installation (if applicable): N/A

20. Terms and conditions of repair parts indicating date of parts price lists and any discounts from list prices (if applicable): N/A

20a. Terms and conditions for any other services (if applicable): N/A

21. List of service and distribution points (if applicable): N/A

22. List of participating dealers (if applicable): N/A

23. Preventive maintenance (if applicable): N/A

24a. Environmental attributes, e.g., recycled content, energy efficiency, and/or reduced pollutants: N/A

24b. Section 508 Compliant: If applicable, contact E & E's Program Manager regarding 508 compliance information on EIT services. The EIT standards can be found at: www.Section508.gov/.

25. DUNS Number: 03-776-1004

26. Contractor is registered in SAM Database:

E & E is currently registered and has an active profile in SAM.

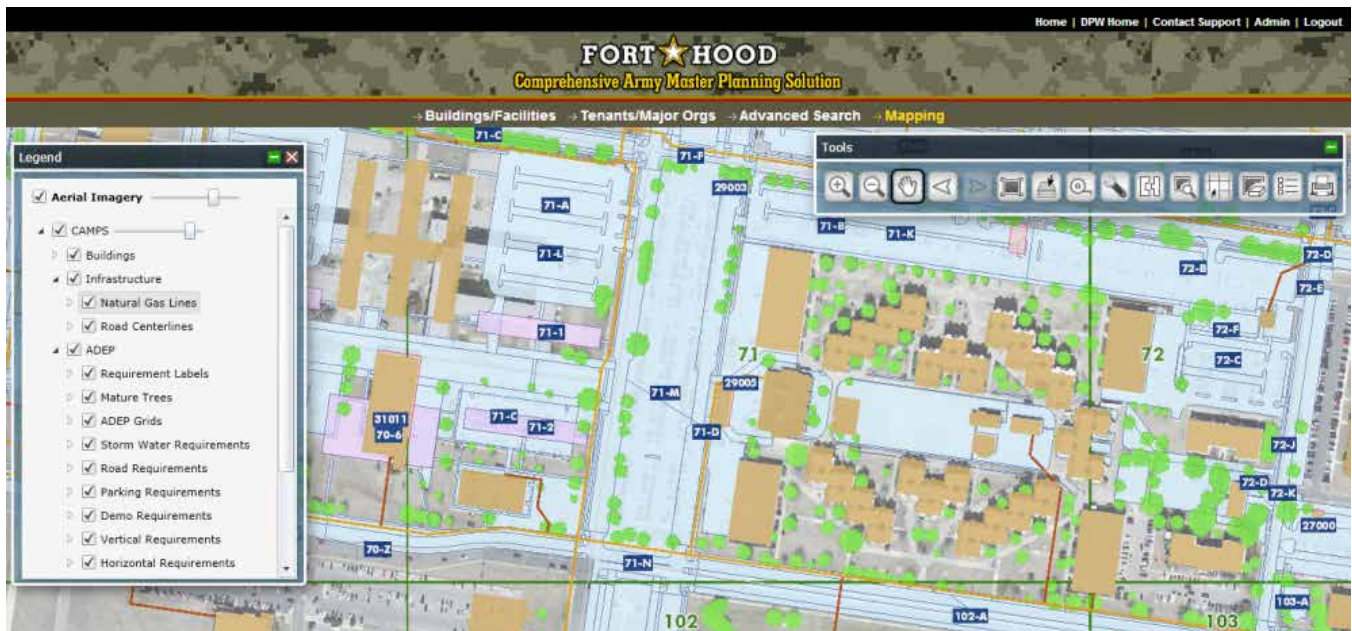


About E & E

Offering the Best Value in Environmental Services

Ecology and Environment, Inc. (E & E) is a full-service environmental consulting company employing industry leaders in scientific, engineering, and planning disciplines. We have worked with clients on thousands of projects in more than 120 countries, including some of the most complex, high-profile projects in the world. With nearly 900 employees, our work is concentrated in water, energy, restoration, planning, engineering, and environmental assessment. We work collaboratively with clients to develop technically-sound, science-based solutions to the leading environmental challenges of our time. We provide high-quality, efficient, and cost-effective “value-added” consulting services to numerous

federal, state, and local agencies, organizations, and governments, including the EPA, DOD (Army, Navy, and Air Force), DOE, DOI (NPS, BOEM, BLM, USFWS), USDA (US Forest Service, NRC), DHS, FERC, FAA, DOS, GSA, and MCC. E & E has been awarded repeat, consecutive contracts with numerous federal agencies by using this GSA contract mechanism. Since the award of our first GSA FSS, we have been awarded over 438 projects totaling more than \$57 million. This reflects our commitment and ability to complete projects on time and within budget; supply top-quality planners, engineers, and environmental specialists at the best value to the client; and implement innovative and cost-effective solutions.



E & E developed the APA-award winning Comprehensive Asset Master Planning Solution (CAMPS) to support both day-to-day and long-term installation planning activities involving the built and natural environments at Fort Hood. CAMPS also serves as an implementation tool for the master planning requirements and products identified in the new Installation Master Planning UFC (UFC 2-100-01).

Procedures for

Obtaining E & E Services Using GSA

All federal agencies may access E & E's services under this GSA Federal Supply Schedule. State and local governments can also access E & E through the Recovery Purchasing Program and the American Recovery and Reinvestment Act 2009. To obtain E & E's services, a potential client must go through a contracting office, just as they would for issuing a task order under any other contract.

Federal agencies can use the GSA Advantage™ system and e-Buy program to solicit and obtain services from the Professional Services Schedule holder. E & E routinely receives solicitation notices from the GSA e-Buy and responds with quotes in a timely manner. BPAs can be obtained through provisions in FAR 8.4. Using BPAs, an agency can develop a cadre of companies that provide the services to match its capacity and the routine needs of that agency. The agency uses the GSA Schedule contract terms and conditions and proposes types of services needed for competition amongst the qualified schedule contractors. They select and negotiate the contract with chosen service providers to obtain the desired number of BPA holders to assign work. Once the BPAs are in place, the agency can quickly procure the necessary services.

Agencies can use tools in the GSA Advantage™ website to procure services and produces electronically through the GSA e-Buy electronic quote system. Contracting officers have direct access to prepare the RFQ in e-Buy and can either direct the quote request to specific vendors or broadcast it. RFQs are normally used when the nature of the service is fairly well defined. Increasingly, the e-Buy system is used for requests for information (RFIs), market surveys, and BPA submissions. The DOI, DOE, and others also use FEDCONNECT as an electronic medium for acquisition of services. E & E is registered in GSA Advantage™ and with FEDCONNECT.

Process to Hire E & E

Ordering processes are described in FAR 8.4 for orders below the micro purchase threshold, for orders greater than the micro purchase threshold and less than the simplified acquisition threshold and for orders greater than the simplified acquisition threshold.

State and Local Government

Note that E & E has accepted modifications to its contract that allows state and local government entities to procure services through the schedule for the Recovery Purchase Program activities.

In addition, state and local government entities can use the schedule for obtaining services in support of project funded through the American Recovery and Reinvestment Act of 2009 (ARRA).

Please contact E & E GSA Program Manager Kevin Donovan (kdonovan@ene.com) for details on these programs.

Description of

Special Item Numbers (SIN) and E & E Experience

SIN 899 1:

Environmental Consulting Services

E & E provides services to assist federal agencies with planning for both built and natural environments, including the preparation of Real Property Master Plans (RPMP), EAs, EISs, FONSI, and EBSs (Phase I and II); NRCRs (e.g., endangered species, wetlands, watersheds, archaeological, historic, and other natural and cultural resources management plans, studies, and consultations); ILUMP, INRMPS, AICUZ, and airspace/range studies; GIS mapping support; economic and risk analyses; public meetings/hearings support; and expert witness/testimony. E & E provides a broad-based, multidisciplinary environmental planning services and documentation support, including environmental program management, environmental assessment, environmental technology evaluation, and environmental information management. Newer programs with the Federal and state governments include preparation of climate adaptation and action plans and comprehensive energy improvement plans that consider renewable energy.

Environmental Program Management

Environmental Program Planning: Environmental Program Planning: We develop environmental compliance programs that incorporate leading-edge digital technologies to support planning and management activities. Our programs facilitate compliance with state and federal environmental regulations and inform technical design for monitoring and reporting programs. For example, we developed management plans for Fort Hood that required a complex, multidisciplinary approach for identification of all the utilities, waste areas, and building conditions throughout the facility. We

worked collaboratively with facility planners and compliance personnel to develop a Comprehensive Asset Master Planning Solution (CAMPS) to enable more efficient and informed decision-making. We also provide ongoing advice and assistance with data and information in support of clients' environmental programs.

Environmental Information Management:

Our history of conducting environmental assessments for linear transmission systems has informed our ability to improve and streamline information management and analysis capabilities. Our environmental scientists and information management specialists—utilizing experience in the design, development, and implementation of complex environmental programs—have developed real-time, web-enabled reporting systems for a more accurate and expeditious decision making process. We regularly process diverse environmental data (chemical, geophysical, biological, and locational) and conduct modeling for analyses and reporting purposes. Much of the environmental data is maintained through the GIS services provided in SIN 899 7.



E & E conducted stormwater/wastewater monitoring at Andrews AFB to support permit compliance.

Description of

Special Item Numbers (SIN) and E & E Experience

Environmental Assessment, Characterization, and Monitoring: We conduct site assessments and remedial investigations, and monitor conditions to identify potential changes. This work is completed on a routine basis to satisfy regulatory programs, permit applications, and reporting requirements.

Environmental and Social Assessment: We plan and conduct environmental and social assessments based primarily on NEPA and our clients' guidance documents including executive orders and state and local regulations. Our capabilities package comes from over 40 years in the field defining project requirements, completing fatal flaw analyses, determining mitigation requirements, and identifying critical regulatory issues before they become problematic so projects can be completed on time and within budget.

Field Logistics, Sampling, and Analysis: We manage intense field programs that require collection and analysis of air, surface water, groundwater, soil, and biological samples. With constantly evolving instrumentation and reporting mechanisms, field sampling has become more sophisticated. Our specialists monitor and incorporate new technologies to improve collection and reporting techniques for our clients.

- We use mobile technologies to deploy easy-to-use applications from centralized servers to improve workflows, increase productivity, streamline QA/QC efforts, and enhance operational coordination.
- LiDAR and remote sensing technologies allow our organization to develop, manage, analyze, and deliver critical engineering, planning, and permitting data early in the project life cycle. We use remote sensing to reduce project uncertainties, constrain costs, allocate

resources, save field time, streamline permitting, and ultimately further project success.

Exposure Assessment: Our safety, health, and risk specialists provide assessment of chemical, physical, and biological risk. We conduct studies on the nature and extent of contamination in soil, surface water, ground water, and sediment. We delineate terrestrial and aquatic habitats according to specific federal requirements and analyze pathways to determine the extent of risk to the environment and human populations. We estimate exposure, toxicity, and risk to human health and the environment.

Ecological Assessment: Our scientists and biologists conduct ecological assessments of streams and lakes, wetlands, near-coastal environments, forest and air lands. All assessments of this nature go through a planning process with the input from involved agencies.

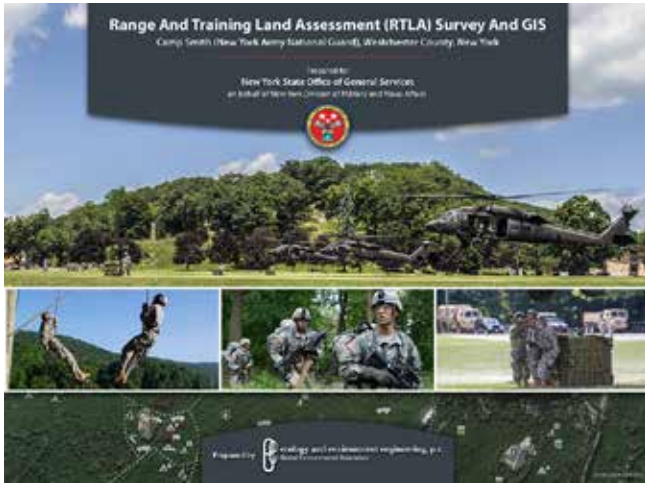
Remediation Assessments: In conjunction with SIN 899 8, our engineers, chemists, and hazardous waste specialists develop remedial action plans that include remedial investigation/feasibility studies (RI/FS) and engineering evaluation/cost analyses (EE/CAs).

Waste Management Services

E & E conducts analyses of options under consideration for waste management services and software, and performs data collection, data development, analyses of comments, regulatory and economic analyses, feasibility analyses, hazard assessments, exposure assessments, and risk analyses. We also develop waste characterization studies and make recommendations for management strategies, including identification of recycling alternatives.

Description of

Special Item Numbers (SIN) and E & E Experience



E & E's multidisciplinary team of biologists, GIS analysts and graphic artists prepared a concise, well-written and visually appealing report that was highly regarded by the client.

Environmental Compliance Services

E & E conducts environmental compliance audits; compliance management planning; pollution prevention surveys, plans, and opportunity assessments; and provides air, water, and waste permitting support. We conduct air emissions studies/inventories; water/wastewater studies; Spill Prevention Control and Countermeasure (SPCC) Plans; and stormwater management plans.

Environmental Advisory Services

E & E provides remote environmental advisory services that may include telephone assistance with hazardous materials spills, poisons, hazardous material classification and MSDS support, industrial

hygiene support, waste management support, compliance issues support, and other related services via environmental hotlines and/or other media. We develop environmental databases for specific research requests, and disseminate information to particular agencies on the environmental documentation. For example, we operated the GSA PBS NEPA hotline over a four- year period.

EISs and EAs under NEPA

This includes activities such as data identification, data collection, data development, and data interpretation; sampling and analysis; preparation of environmental impact evaluations and reports; and preparation of material for and attendance at public meetings and public hearings.

We prepare third-party environmental impact assessments for the responsible federal agency. For commercial entities, we prepare of the

E & E Has Prepared NEPA Documents for Numerous Federal Agencies

- Department of the Army
- Department of the Navy
- Department of the Air Force
- Department of Homeland Security
- Bureau of Land Management
- Millennium Challenge Corporation
- Bureau of Ocean Energy Management
- National Park Service
- Department of Energy
- Federal Energy Regulatory Commission
- Federal Aviation Administration
- Department of State

"I really appreciate the work that E & E performed as part of the RTLA project at Camp Smith. All work and deliverables were completed within established timeframes. Also, Camp Smith and DMNA were provided with project updates in a very timely fashion throughout the project. I look forward to working with you and your company in the future."

—Peter Jensen, Branch Chief DMNA Environmental Compliance Branch

Description of

Special Item Numbers (SIN) and E & E Experience

environmental impact assessments and support documentation as the applicant's representative. This may include planning and conducting assessments for environmental control such as total maximum daily load (TMDL), NPDES programs, emissions inventories, and toxic materials studies. It also may include completion of environmental field studies for wetlands, cultural resources, natural resources/ T&E species, and noise.

To support large-scale environmental impact assessments, our team has developed a number of web-enabled IT/GIS solutions like CORRELATE and ALTERAVUE.



- Correlate empowers our clients to more easily map, analyze, identify, and ultimately address stakeholder concerns. With federal agencies promoting increased requirements for transparency in development projects, E & E's Correlate tool is important because it allows projects team to more readily build relationships with stakeholders in the siting and routing of major corridors. It offers the tools to more quickly build consensus and build better projects.
- AlteraVue provides a means to instantly view, edit, and analyze alternatives to make more effective and informed decisions.

Endangered Species, Wetlands, Watersheds, and Other Natural Resource Management Plans, Studies and Consultations

These activities include review of existing reports and management plans; coordination with USFWS, BLM, and other federal agencies; performing surveys; and applying data collection results to prepare reports and/or maps. We can support development of Natural Resource Damage Assessment (NRDA) programs, and provide detailed studies in support of federal actions on delineation of wetlands, wetland management plans, and specific scientific specialties.

Archaeological, Historic, and Other Cultural Resource Management Plans, Studies and Consultations

E & E conducts resource surveys/studies; evaluates resource data; prepares appropriate nominations/reports; prepares agency management plans; and coordinates with State Historical Preservation Offices and the Advisory Council for Historic Preservations.



E & E is providing oversight of the consultant team retained by the PRP to conduct an RI/FS at the North and South Maybe Mines, Idaho. We are reviewing and commenting on the PRP's borrow study/removal design work plans, overseeing PRP field activities, and providing split sampling.

Description of

Special Item Numbers (SIN) and E & E Experience

Economic, Technical, and Risk Analyses

E & E conducts analyses of options under consideration for environmental actions and performs activities such as data collection, data development, analyses of comments, regulatory and economic analyses, feasibility analyses, hazard assessments, exposure assessments, and risk analyses. This includes financial economic viability analyses of proposed actions for: NRDA programs, feasibility studies of privatization and the form of privatization, and the economics of environmental actions to health care.

Environmental Compliance Audits

E & E conducts federal agency-specific audit programs such as ECAMP, ECAS, health and safety and OSHA compliance activities (e.g., industrial hygiene surveys). We evaluate findings and prepare necessary documentation/reports, including out-brief at the specific agency installation or program office. We assist agencies in developing the EPCRA reports and help assist with administration of the EPCRA programs.

"I wanted to express my sincere and ongoing appreciation for the work E & E is doing for BLM on the Rand project"

—Kris Doebbler, BLM RPM and COR for RHMC

Compliance Management Planning

E & E develops management plans that cover policy, planning, implementation and operation, checking and corrective action, and management review. These plans include Oil Spill Response Plans; Chemical Risk Management Plans; SPCC Plans, and contingency plans in all phases of domestic preparedness, and recovery of operations following an accident or disaster.



E & E managed a high-profile RI at the Sylvania Coming FUSRAP Site. Through partnering with USACE Kansas City USACE Omaha HTRW Center for Expertise, we compressed the report review/comment periods and completed the RI/baseline risk assessment report under an aggressive nine-month schedule. The client commented "The RI is very well written—easy to read and follow."

Pollution Prevention (P2) Surveys

E & E conducts pollution prevention surveys; develops pollution prevention plans; establishes inventories for hazardous materials; evaluates the economic and technical feasibility of process changes and recycling alternatives; and creates databases to track progress in achieving pollution prevention goals. This work includes technical/administrative services for developing, implementing, and auditing Hazardous Materials Pharmacies.

Description of

Special Item Numbers (SIN) and E & E Experience

Assessment and Investigations under the Comprehensive Environmental Response, Compensation, and Liability Act (CERCLA)

Activities performed by E & E under this SIN include PA/SIs CRPs, RI/FSs, FFSs, RDs, NFRAPP DDs, RAB support, MAPs, RODs, EE/CAs, and AR/ARIs. We perform GIS services, human health and ecological risk assessments/analyses, remedial technologies assessments, treatability/pilot studies, LTM/modeling for natural attenuation alternatives, site characterizations studies, hydrogeological investigations/modeling, consulting support to federal agencies for facility compliance requirements, and project closeouts.

Assessment and Investigations Under the Resource Conservation and Recovery Act (RCRA)

We perform SAs, RFAs, CMSs, CAPs, closure plans, human health and ecological risk assessments/analyses, development of emergency response plans, treatability studies, hydrogeological investigations/modeling, and GIS services.

General Waste Management Services

These activities include general surveys of waste management practices to improve the overall operation and compliance of the federal entity.

"E & E consistently provides quality plan deliverables that are focused on being functional for local jurisdictions."

—Aaron R. Kenneston, Washoe County Emergency Manager

SIN 899 7: GIS Services

E & E provides operational services, advice, and guidance in support of agency environmental programs utilizing GIS. Our services include mapping and cartography, natural resources planning, migration pathway analysis, pollution analysis, site selection, and emergency preparedness planning. Our GIS experts specialize in developing and utilizing GIS for environmental assessments, corridor analysis, wetland delineation, vegetation mapping, and land use planning. We maintain fluency in the most up-to-date ESRI programs, including ARC-based database designs, development, and documentation; spatial analysis, modeling, and report preparation; and production of high-quality cartographic products. In concert with our scientists and engineers, our GIS team can develop custom user interfaces, integrated applications, and spatial visualization techniques to better analyze and display study results. We also provide online, real-time data access for



To improve data management for the Oregon Military Department, Office of Emergency Management, E & E developed a web-based, intuitive capability assessment tool that collects and compiles data regarding response capabilities and readiness of agencies statewide and generates summary reports to help the OEM determine the level of preparedness of agencies and jurisdictions statewide. E & E also developed an online system guide and webcast training for users and administrators. The system has been proven to streamline data collection and federal reporting.

Description of

Special Item Numbers (SIN) and E & E Experience

"[E & E's] support of our projects has been no less than stellar. [The developer's] ability to listen to customers, develop a solution, and provide feedback is truly impressive and appreciated. I could site several examples of assisting our local jurisdictions, State agencies, and OEM staff with technical issues, questions, and just simple helping hands throughout the process."

—Matt Marheine, Plans and Training Section Manager, Oregon OEM

enhancement of review functions and information exchange.

We perform:

- Data Development for facility features, geologic logs and maps, wetland boundaries, historic project data, CADD files, digital orthophotographs, planimetric features, and topographic data;
- Data Analysis: We perform queries, generate maps, and produce 3D/4D interactive graphics, video, and desktop visualization packages; and
- Data Interpretation/Output to develop tables/reports, geographic logs, cross-sections, wetlands, land use and natural resource maps, and contour maps.

E & E developed mobile application using IGEOTrak that synchronizes field data collection forms from the cloud to the iPad. This data is then transmitted directly into another E & E-developed AlteraVue program.

SIN 899 8:

Remediation and Reclamation Services

E & E provides all necessary services to conduct investigations, remedial actions, long-term monitoring, and long-term operations associated with

environmental restoration activities under CERCLA, RCRA, and/or other environmental regulations. Services include containment, removal, treatment (on-site and off-site), transportation, and disposal of contaminated waste. Associated services include remedial design, cleanup/construction oversight, peer review, information management support, public outreach support, GIS support services, ancillary data gap evaluation, and homeland protection response.

Contaminants may include hazardous, toxic, petroleum-based, radioactive, biological agents, chemical agents, and explosive constituents or any combination thereof. These may occur in including soils, sediments, sludges, liquids, air, water, debris, structures, and various containers. A wide variety of potential remediation activities are included under this SIN. Examples include: slurry walls, subsurface barriers, landfill closures, soil/sludge stabilization/solidification, water/groundwater treatment, dewatering, bioremediation, thermal treatment, demolition, debris removal, and use of innovative technologies.

Overall services include performance of CERCLA removal actions, RCRA interim measures, RCRA closures, brownfields support, and emergency response and management (ER&M) services.



E & E conducted a high-profile, \$3.5 million remedial investigation/feasibility study (RI/FS) for the Red Devil Mine, a remote mercury mine in Alaska, including preparation of the CERCLA Proposed Plan and Record of Decision. It included collaboration with BLM scientists for the sampling program.

Description of

Special Item Numbers (SIN) and E & E Experience



E & E provided project management and remedial designs for the EPA-required dredging action of PCB contamination on the Hudson River. As part of this \$1.5-billion project, we designed a web-based mapping tool that allows users to access historical information, laboratory results, and other spatial data in one place. We are currently providing contractor oversight of dredging.

ER&M services include appropriate actions to contain, prevent the release of, and/or remove contaminants associated with NBC/CT and/or WMD incidents and threats; rapid response to chemical fires; oil spills; chemical releases/spills; floods; and natural disasters.

Short- and long-term operation and maintenance (O&M) activities associated with hazardous waste facilities are included in this SIN. These include groundwater/surface water treatment facilities; leachate facilities; soil vapor extraction; dual phase vapor extraction; low temperature thermal desorption; soil stabilization; and radiological, biological, and chemical decontamination and treatment.

SIN 00CORP-500:

Order-Level Materials

Order-Level Materials (OLMs) are supplies and/or services acquired in direct support of an individual task or delivery order placed against a Federal

Supply Schedule (FSS) contract or FSS blanket purchase agreement (BPA). OLMs are not defined, priced, or awarded at the FSS contract level. They are unknown before a task or delivery order is placed against the FSS contract or FSS BPA. OLMs are only authorized for inclusion at the order level under a Time-and- Materials (T&M) or Labor-Hour (LH) Contract Line Item Number (CLIN) and are subject to a Not To Exceed (NTE) ceiling price. OLMs include direct materials, subcontracts for supplies and incidental services for which there is not a labor category specified in the FSS contract, other direct costs (separate from those under [ODC] SINs), and indirect costs. OLMs are purchased under the authority of the FSS Program and are not "open market items."

Items awarded under ancillary supplies/services or ODC SINs are not OLMs. These items are defined, priced, and awarded at the FSS contract level, whereas OLMs are unknown before an order is placed. Ancillary supplies/services and ODC SINs are for use under all order type CLINs (Fixed-Price [FP], T&M, and LH), whereas the OLMs SIN is only authorized for use under T&M and LH order CLINs.

The OLMs SIN is only authorized for use in direct support of another awarded SIN. Price analysis for OLMs is not conducted when awarding the FSS contract or FSS BPA; therefore, GSAR 538.270 and 538.271 do not apply to OLMs. OLMs are defined and priced at the ordering activity level in accordance with GSAR clause 552.238-82 Special Ordering Procedures for the Acquisition of Order-Level Materials. Prices for items provided under the OLMs SIN must be inclusive of the Industrial Funding Fee (IFF). The cumulative value of OLMs in an individual task or delivery order cannot exceed 33.33% of the total value of the order.

The Maximum Order Threshold for the OLM SINs is \$100,000.

GSA Professional Services Labor Price List

Ecology and Environment, Inc.

Contract 47QRAA18D0073

00CORP Environmental Services // SINS 891-1, 891-7, 891-8

GSA FSS Labor Category	Base Period: March 30, 2018 - March 29, 2023				
	Year 1	Year 2	Year 3	Year 4	Year 5
	03/30/2018 to 03/29/2019	03/30/2019 to 03/29/2020	03/30/2020 to 03/29/2021	03/30/2021 to 03/29/2022	03/30/2021 to 03/29/2022
Principal Scientist / Planner / Engineer	\$235.00	\$239.70	\$244.49	\$249.38	\$254.37
Scientist / Planner / Engineer 1	215.00	219.30	223.69	228.16	232.72
Scientist / Planner / Engineer 2	195.00	198.90	202.88	206.94	211.07
Scientist / Planner / Engineer 3	180.00	183.60	187.27	191.02	194.84
Scientist / Planner / Engineer 4	170.00	173.40	176.87	180.41	184.01
Scientist / Planner / Engineer 5	155.00	158.10	161.26	164.49	167.78
Scientist / Planner / Engineer 6	145.00	147.90	150.86	153.88	156.95
Scientist / Planner / Engineer 7	130.00	132.60	135.25	137.96	140.72
Scientist / Planner / Engineer 8	120.00	122.40	124.85	127.34	129.89
Scientist / Planner / Engineer 9	105.00	107.10	109.24	111.43	113.66
Scientist / Planner / Engineer 10	90.00	91.80	93.64	95.51	97.42
Field Surveyor 1 **	90.00	91.80	93.64	95.51	97.42
Field Surveyor 2 **	75.00	76.50	78.03	79.59	81.18
Field Surveyor 3 **	65.00	66.30	67.63	68.98	70.36
Field Surveyor 4 **	55.00	56.10	57.22	58.37	59.53
CAD and Drafting **	105.00	107.10	109.24	111.43	113.66
Information Technology 1	170.00	173.40	176.87	180.41	184.01
Information Technology 2	150.00	153.00	156.06	159.18	162.36
Information Technology 3	135.00	137.70	140.45	143.26	146.13
Information Technology 4	110.00	112.20	114.44	116.73	119.07
Information Technology 5	90.00	91.80	93.64	95.51	97.42
Administrative Support **	80.00	81.60	83.23	84.90	86.59
Production Support **	65.00	66.30	67.63	68.98	70.36

** Indicates SCA eligible categories. See the SCA Matrix following the Price list for additional information regarding these labor categories.

SCA Matrix

SCA Eligible Contract Labor Category	SCA Equivalent Code-Title	WD Number
Field Surveyor 1	30090 - Environmental Technician	2015-4147
Field Surveyor 2	30090 - Environmental Technician	2015-4147
Field Surveyor 3	30090 - Environmental Technician	2015-4147
Field Surveyor 4	30090 - Environmental Technician	2015-4147
CAD/Drafting	30061 - Drafter/CAD Operator I	2015-4147
Administrative Support	01611 - Word Processor I	2015-4147
Production Support	01111 - General Clerk I	2015-4147

The Service Contract Act (SCA) is applicable to this contract and it includes SCA applicable labor categories. The prices for the indicated (**) SCA labor categories are based on the U.S. Department of Labor Wage Determination Number(s) identified in the SCA matrix. The prices awarded are in line with the geographic scope of the contract (i.e. nationwide).

The WD Revision Number is: 6

The WD Revision Date is: 2018-01-10

The WD State is: New York

The WD Area is: New York Counties of Erie, Niagara

Volume Discount:

2% discount for the total value of orders equal to or exceeding \$250,000

3% discount for the total value of orders equal to or exceeding \$500,000

Professional Labor Category Descriptions

The following pages contain **Ecology and Environment, Inc.'s (E & E)** labor category descriptions inclusive of minimum education, general experience, specialized experience, and functional duties.

Except for Engineers, E & E substitutes experience for education, and conversely education for experience. The substitution rate is dependent upon the position, the job responsibilities, and the level of expertise required. The substitution rate falls within these guidelines:

- A Bachelor’s degree may be equivalent to an Associate’s degree plus two years of experience;
- A Master’s degree may be equivalent to a Bachelor’s degree plus two years of experience; and,
- A Doctoral degree may be equivalent to a Master’s degree plus two years of experience, or a Bachelor’s degree plus four years of experience.

Labor Category Title	Functional Duties	Minimum Education; and, Training or Certification Requirements	Minimum Experience
Principal Scientist/ Planner / Engineer	<p>Performs professional environmental services, including consulting, program planning, information management, assessment, characterization, monitoring, social assessment, field logistics, sampling, studies, analysis, compliance, advisory, impact statements and assessments under NEPA, assessments and investigations under RCRA and CERCLA, and remediation and reclamation</p> <p>Works under executive direction. Performs day-to-day management of overall contract support operations, possibly involving multiple projects and groups of personnel at multiple locations. Organizes, directs, and coordinates the planning and production of all contract support activities. Provides overall policy and procedural direction to the program staff.</p>	<p>Bachelor’s Degree</p> <p>PE license required when preparing, signing and sealing, and submitting engineering plans and drawings.</p>	<p>18 years of overall experience in a scientific, planning or engineering field. Includes 12 years of direct supervision of technical personnel involved in management support of complex environmental situations.</p>

Labor Category Title	Functional Duties	Minimum Education; and, Training or Certification Requirements	Minimum Experience
Scientist / Planner / Engineer 1	<p>Performs professional environmental services, including consulting, program planning, information management, assessment, characterization, monitoring, social assessment, field logistics, sampling, studies, analysis, compliance, advisory, impact statements and assessments under NEPA, assessments and investigations under RCRA and CERCLA, and remediation and reclamation.</p> <p>Works under general supervision. Performs day-to-day management or planning of overall contract support operations, possibly involving multiple projects and groups of personnel at multiple locations. Organizes, directs, and coordinates the planning and production of contract support activities.</p>	<p>Bachelor's Degree</p> <p>PE license required when preparing, signing and sealing, and submitting engineering plans and drawings.</p>	<p>15 years of experience in a scientific, planning or engineering field. Includes 10 years of direct supervision of technical personnel involved in management support of complex environmental situations.</p>
Scientist / Planner / Engineer 2	<p>Performs professional environmental services, including consulting, program planning, information management, assessment, characterization, monitoring, social assessment, field logistics, sampling, studies, analysis, compliance, advisory, impact statements and assessments under NEPA, assessments and investigations under RCRA and CERCLA, and remediation and reclamation.</p> <p>Works under general supervision. Performs day-to-day management or planning of overall contract support operations.</p>	<p>Bachelor's Degree</p> <p>PE license required when preparing, signing and sealing, and submitting engineering plans and drawings.</p>	<p>12 years of experience in a scientific, planning or engineering field.</p>

Labor Category Title	Functional Duties	Minimum Education; and, Training or Certification Requirements	Minimum Experience
<p>Scientist / Planner / Engineer 3</p>	<p>Performs professional environmental services, including consulting, program planning, information management, assessment, characterization, monitoring, social assessment, field logistics, sampling, studies, analysis, compliance, advisory, impact statements and assessments under NEPA, assessments and investigations under RCRA and CERCLA, and remediation and reclamation.</p> <p>Works under general supervision. Performs day-to-day management or planning of overall contract support operations.</p>	<p>Bachelor’s Degree</p> <p>PE license required when preparing, signing and sealing, and submitting engineering plans and drawings.</p>	<p>10 or more years’ experience in a scientific, planning or engineering field.</p>
<p>Scientist / Planner / Engineer 4</p>	<p>Performs professional environmental services, including consulting, program planning, information management, assessment, characterization, monitoring, social assessment, field logistics, sampling, studies, analysis, compliance, advisory, impact statements and assessments under NEPA, assessments and investigations under RCRA and CERCLA, and remediation and reclamation.</p> <p>Works under general supervision. Leads efforts and supervise staff involved with the applications of scientific, planning or engineering disciplines in the technical field directly related to the required supported tasking areas.</p>	<p>Bachelor’s Degree</p> <p>PE license required when preparing, signing and sealing and submitting engineering plans and drawings.</p>	<p>8 years of experience in a scientific, planning or engineering field.</p>

Labor Category Title	Functional Duties	Minimum Education; and, Training or Certification Requirements	Minimum Experience
Scientist / Planner / Engineer 5	<p>Performs professional environmental services, including consulting, program planning, information management, assessment, characterization, monitoring, social assessment, field logistics, sampling, studies, analysis, compliance, advisory, impact statements and assessments under NEPA, assessments and investigations under RCRA and CERCLA, and remediation and reclamation.</p> <p>Works under general supervision. Reports to senior members of the team.</p>	<p>Bachelor's Degree</p> <p>PE license required when preparing, signing and sealing, and submitting engineering plans and drawings.</p>	<p>7 or more years' experience in a scientific, planning or engineering field.</p>
Scientist / Planner / Engineer 6	<p>Performs professional environmental services, including consulting, program planning, information management, assessment, characterization, monitoring, social assessment, field logistics, sampling, studies, analysis, compliance, advisory, impact statements and assessments under NEPA, assessments and investigations under RCRA and CERCLA, and remediation and reclamation.</p> <p>Works under general supervision. Reports to senior members of the team.</p>	<p>Bachelor's Degree</p> <p>PE license required when preparing, signing and sealing and submitting engineering plans and drawings.</p>	<p>5 years of experience in a scientific, planning or engineering field.</p>

Labor Category Title	Functional Duties	Minimum Education; and, Training or Certification Requirements	Minimum Experience
<p>Scientist / Planner / Engineer 7</p>	<p>Performs professional environmental services, including consulting, program planning, information management, assessment, characterization, monitoring, social assessment, field logistics, sampling, studies, analysis, compliance, advisory, impact statements and assessments under NEPA, assessments and investigations under RCRA and CERCLA, and remediation and reclamation.</p> <p>Works under general supervision. Reports to senior members of the team.</p>	<p>Bachelor’s Degree</p> <p>PE license required when preparing, signing and sealing, and submitting engineering plans and drawings.</p>	<p>3 years of experience in a scientific, planning, or engineering field. Entry level.</p>
<p>Scientist / Planner / Engineer 8</p>	<p>Performs professional environmental services, including consulting, program planning, information management, assessment, characterization, monitoring, social assessment, field logistics, sampling, studies, analysis, compliance, advisory, impact statements and assessments under NEPA, assessments and investigations under RCRA and CERCLA, and remediation and reclamation.</p> <p>Works under immediate supervision.</p>	<p>Bachelor’s Degree</p> <p>PE license required when preparing, signing and sealing, and submitting engineering plans and drawings.</p>	<p>2 or more years of experience in a scientific, planning or engineering field.</p>

Labor Category Title	Functional Duties	Minimum Education; and, Training or Certification Requirements	Minimum Experience
Scientist / Planner / Engineer 9	<p>Performs professional environmental services, including consulting, program planning, information management, assessment, characterization, monitoring, social assessment, field logistics, sampling, studies, analysis, compliance, advisory, impact statements and assessments under NEPA, assessments and investigations under RCRA and CERCLA, and remediation and reclamation.</p> <p>Works under immediate supervision.</p>	<p>Bachelor's Degree</p> <p>PE license required when preparing, signing and sealing, and submitting engineering plans and drawings.</p>	<p>1 or more years of experience in a scientific, planning or engineering field.</p>
Scientist / Planner / Engineer 10	<p>Performs professional environmental services, including consulting, program planning, information management, assessment, characterization, monitoring, social assessment, field logistics, sampling, studies, analysis, compliance, advisory, impact statements and assessments under NEPA, assessments and investigations under RCRA and CERCLA, and remediation and reclamation.</p> <p>Works under immediate supervision.</p>	<p>Bachelor's Degree</p> <p>PE license required when preparing, signing and sealing, and submitting engineering plans and drawings.</p>	<p>0 years of experience in a scientific, planning, or engineering field. Entry level.</p>
Field Surveyor 1	<p>Conducts field surveys and provides support as needed for wetland delineations, flora and fauna investigations, and investigative sample collection. Gathers and correlates data. Modifies, tests, and operates equipment and devices used in the prevention, control, and remediation of environmental problems.</p>	<p>High School Diploma</p>	<p>5 years of experience related to the duties of the position.</p>

Labor Category Title	Functional Duties	Minimum Education; and, Training or Certification Requirements	Minimum Experience
Field Surveyor 2	Conducts field surveys and provides support as needed for wetland delineations, flora and fauna investigations, and investigative sample collection. Gathers and correlates data. Modifies, tests, and operates equipment and devices used in the prevention, control, and remediation of environmental problems.	High School Diploma	3 years of experience related to the duties of the position.
Field Surveyor 3	Conducts field surveys and provides support as needed for wetland delineations, flora and fauna investigations, and investigative sample collection. Gathers and correlates data. Modifies, tests, and operates equipment and devices used in the prevention, control, and remediation of environmental problems.	High School Diploma	1 year of experience related to the duties of the position.
Field Surveyor 4	Conducts field surveys and provides support as needed for wetland delineations, flora and fauna investigations, and investigative sample collection. Gathers and correlates data. Modifies, tests, and operates equipment and devices used in the prevention, control, and remediation of environmental problems.	High School Diploma	0 years of experience related to the duties of the position. Entry level.

Labor Category Title	Functional Duties	Minimum Education; and, Training or Certification Requirements	Minimum Experience
CAD and Drafting	Prepares drawings, topographical and relief maps used in engineering projects using computer-assisted drafting systems (CAD).	Associate Degree	1 year of experience related to the duties of the position.
Information Technology 1	Builds, maintains, modifies or uses GIS databases using hardware or software applications. Creates, modifies, and tests the code, forms, and script that allow computer applications to run.	Bachelor's Degree	10 years of experience in the field of Geographic Information Systems (GIS) or computer programming.
Information Technology 2	Builds, maintains, modifies or uses GIS databases using hardware or software applications. Creates, modifies, and tests the code, forms, and script that allow computer applications to run.	Bachelor's Degree	7 years of experience in the field of Geographic Information Systems (GIS) or computer programming.
Information Technology 3	Builds, maintains, modifies or uses GIS databases using hardware or software applications. Creates, modifies, and tests the code, forms, and script that allow computer applications to run.	Bachelor's Degree	5 years of experience in the field of Geographic Information Systems (GIS) or computer programming.

Labor Category Title	Functional Duties	Minimum Education; and, Training or Certification Requirements	Minimum Experience
Information Technology 4	Builds, maintains, modifies or uses GIS databases using hardware or software applications. Creates, modifies, and tests the code, forms, and script that allow computer applications to run.	Associate Degree	3 years of experience in the field of Geographic Information Systems (GIS) or computer programming.
Information Technology 5	Builds, maintains, modifies or uses GIS databases using hardware or software applications. Creates, modifies, and tests the code, forms, and script that allow computer applications to run.	Associate Degree	0 years of experience Geographic Information Systems (GIS), geography, computer programming, or related discipline. Entry level.
Administrative Support	Production support of technical documents, reports, charts, and graphics. Updates documents according to editorial changes.	High School Diploma	3 years of experience in word processing and desktop publishing using computer-assisted systems.
Production Support	Production support of technical documents, reports, charts, and graphic. Update documents according to editorial changes.	High School Diploma	0 years of experience in word processing and desktop publishing using computer-assisted systems. Entry level.





Office Locations

Lancaster (Buffalo) NY -- HQ

Arlington VA
(Washington DC)
Albany NY
New York NY
Virginia Beach VA

Pensacola FL
Tallahassee FL
Wellington FL
Anchorage AK
Baton Rouge LA

Boulder CO
Chicago IL
Houston TX
Overland Park KS
Monroeville PA

Portland OR
Sandy UT
San Diego CA
San Francisco CA
Seattle WA